

THE ISLANDS 17

179

A FAMILY DAYSAILER OF REMARKABLE VALUE

The ISLANDS 17 is an outstanding design for open water, bay or lake sailing. This fine sloop provides superb performance under varied loads as a daysailer or racing boat. She is easy to rig and easy to sail, even singlehandedly, but will accommodate six adults comfortably in the roomy cockpit. She is fast and planes with ease, and she is also stiff, stable and forgiving even for novice sailors. The broad beam provides the ISLANDS 17 with great stability and safety. The gunwales are flared for maximum spray deflection and rigidity. Large dry underdeck storage is available under the foredeck and in the lazette aft. Optional gear compartments are under the port and starboard decks. The boat is constructed of hand-laid Fiberglass and features a complete liner with a self bailing cockpit. Extra wide decks and cockpit floor are treated with integral non-skid surfaces. Molded in place foam makes the boat unsinkable.

SPARS, RIGGING AND HARDWARE

The spars are made of anodized aluminum, and include spinnaker hardware, vang bails, downhaul, outhaul and halyard cleats. The mast step is hinged for fast and easy mast placement and can be taken down by one sailor. The standing rigging is 1/8" stainless; the forestay turnbuckle and adjustable shroud extenders, chainplates and traveler rod are of stainless steel. The chainplates are through-bolted on upper hull flanges for extra strength. All blocks are top quality. The main and jib halyards are of braided Dacron. The sails are made of quality DuPont Dacron cloth.

CENTERBOARD AND RUDDER

The centerboard is completely enclosed and is trimmed with a wooden cap. It is constructed of fiberglass with a purchase lift of 2:1. The kick-up rudder of 3/16" aluminum is pivot-mounted between marine plywood cheeks which is fitted with S.S. hardware, a wood tiller and tiller extension.

DIMENSIONS

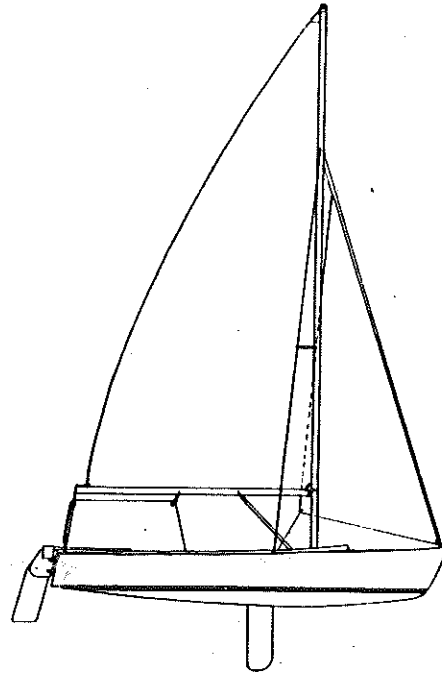
L.O.A.	16'9"
L.W.L.	15'10"
BEAM	6'6"
DRAFT	7" to 3'6"
SAILS:	
Main	100 sq. ft.
Jib	35 sq. ft.
WEIGHT	575 lbs.
MAST HEIGHT	23'3"

COLORS

Standard colors are Hula-White and Top-Cloud Gray. Special colors are available at extra charge.

The ISLANDS 17 was created not only for superb sailing, pleasure and fun, but most importantly for safety. Her high freeboard, broad beam and comfortable seating all insure family safety.

All specifications meet the requirements of the U.S. ISLANDS 17 Class Association.



STANDARD BOAT SAILAWAY:

OPTIONAL EXTRAS

Genoa Jib	\$325.00
Roller Reefing Genoa Jib installed with Suncover	\$600.00
Genoa tracks, adjustable fairlead slides, cam cleats	\$90.00
Spinnaker Sail	\$350.00
Spinnaker Sail, Spinnaker Pole, blocks and lines, installed	\$545.00
Transom motor bracket, installed	\$84.00
Mooring cover, installed	\$375.00
Not installed	\$350.00
4:1 boom vang, installed	\$61.00
Hiking straps, installed	\$65.00

Effective Jan. 1, 1990

All prices and specifications subject to change.

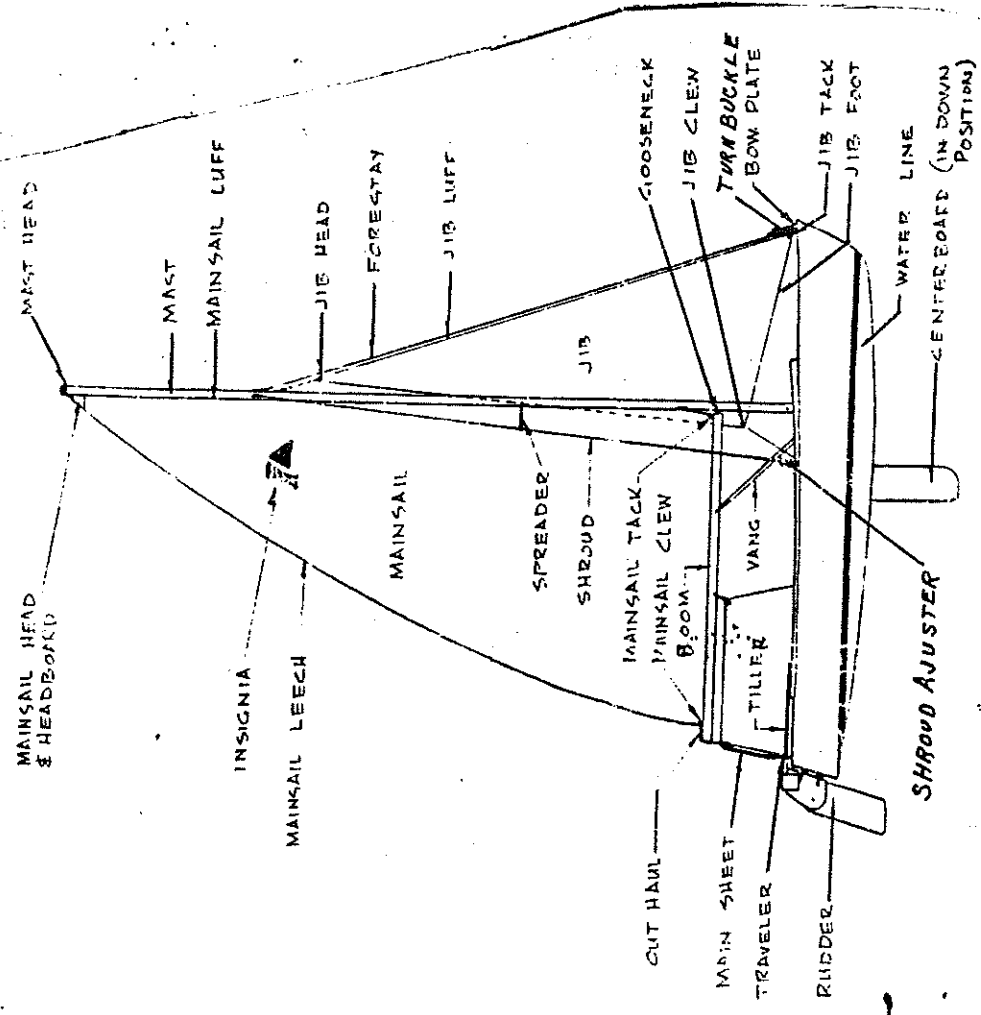
Bob - Main, jib 572/xt

owner's manual

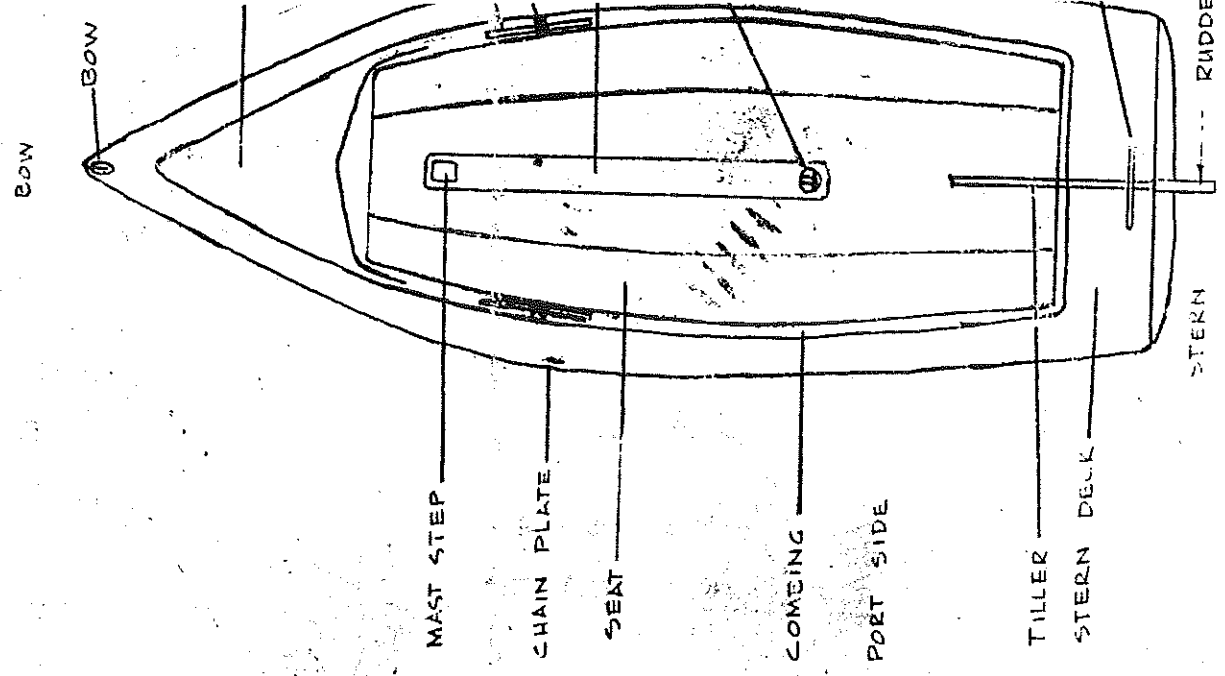
8-53

E. JIB

1. Untie jib halyard from cleat and attach shackle to jib while attaching clips of luff to forestay. Then fasten
2. Tighten halyard and attach to cleat on mast.
3. Tie the jibsheet at its center to the jib clew, letting of the mast.
4. Feed each half through the fairlead and camcleat (adjust on the adjustable tracks, located adjacent to the chain)



WARNING
 Avoid beaching the boat on sand. Operation of the centerboard can be severely affected by accumulation of sand in the centerboard sleeve.



THE ISLANDS 17 RIGGING INSTRUCTIONS

CLIMBER BOAT COMPANY, INC.

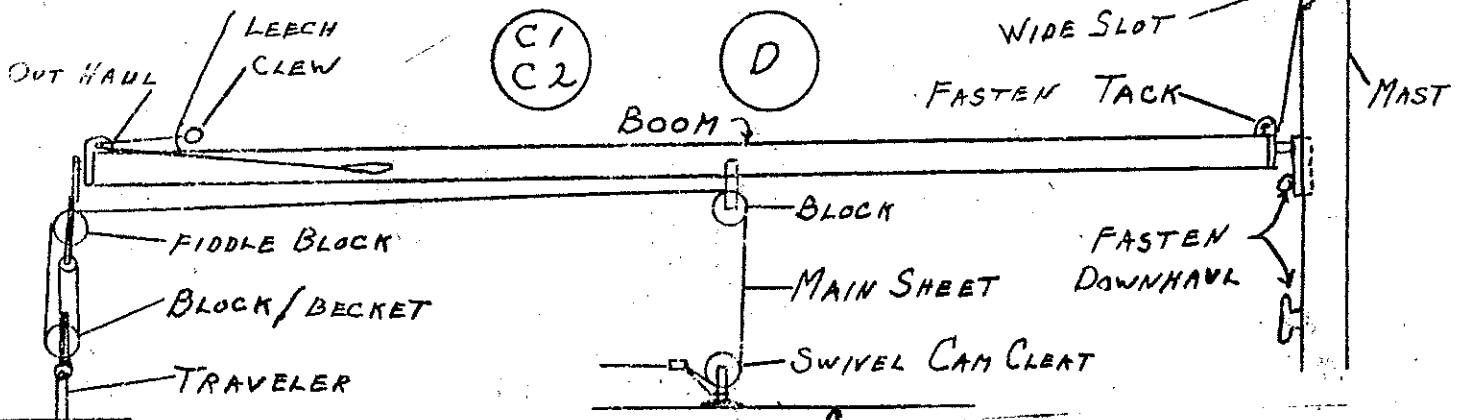
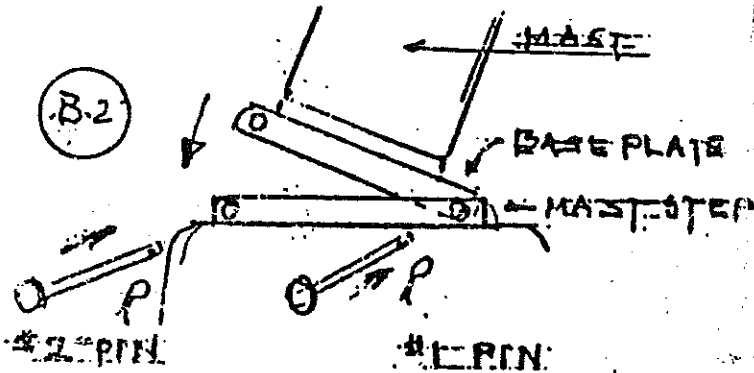
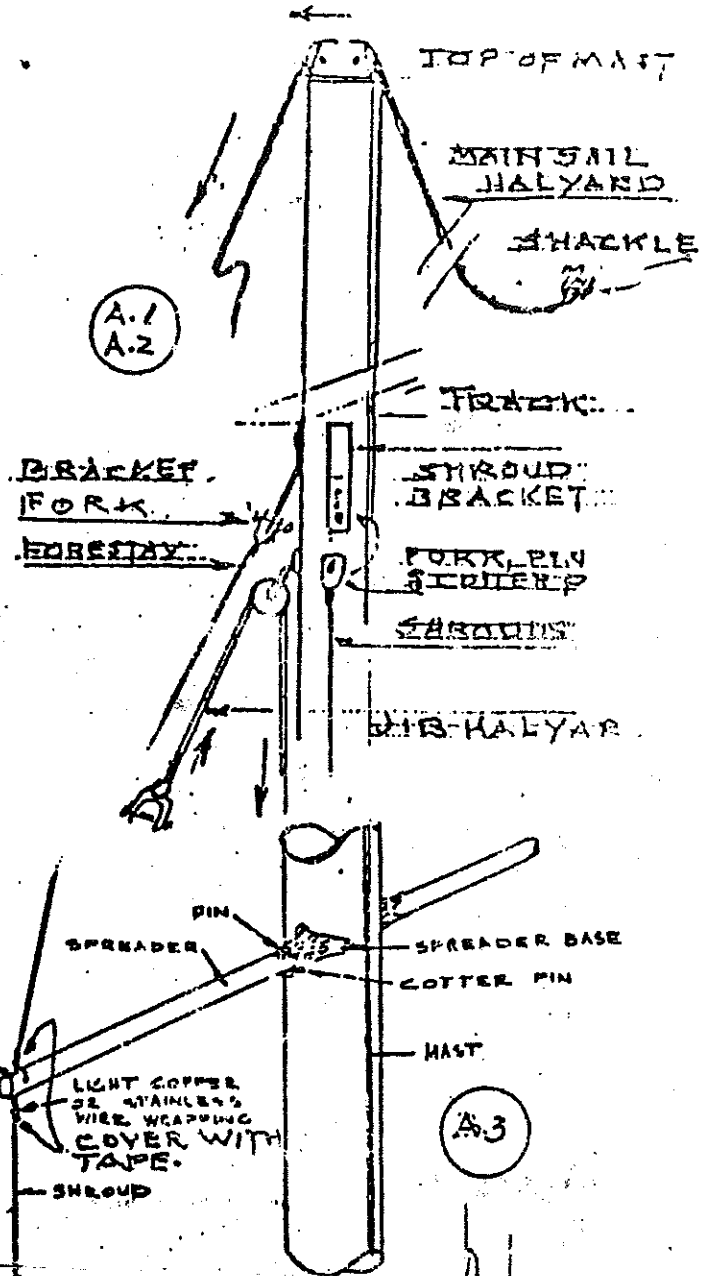
ISLANDS 15 RIGGING INSTRUCTIONS

A. Preparing Mast

1. Halyards for mainsail and jib must be fed through blocks as shown in diagram. Then fasten both ends of each halyard to the two cleats at sides of bottom of mast.
2. Attach two shrouds and forestay to brackets on mast as shown in diagram.
3. Install spreaders to base brackets on mast as illustrated. Then safety-wire the shrouds. Cover wire ends with tape. See diagram.

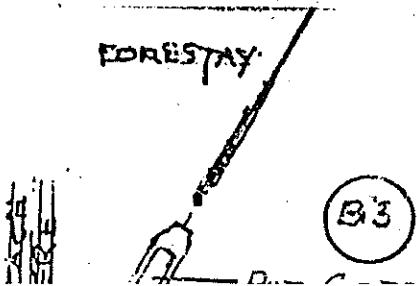
B. Stepping the Mast

1. Fasten lower ends of shrouds to chainplates with adjusters, using 4th hole (from top). Do not fasten forestay, but attach turnbuckle to end.
2. Put bottom plate of mast on maststep as shown, engage rear pin, then raise mast to vertical position and attach forestay to bowplate.
3. Reset shroud adjusters and operate forestay turnbuckle to set the mast in vertical and square position. Adjusters should be equal, turnbuckle snug but not too taut.

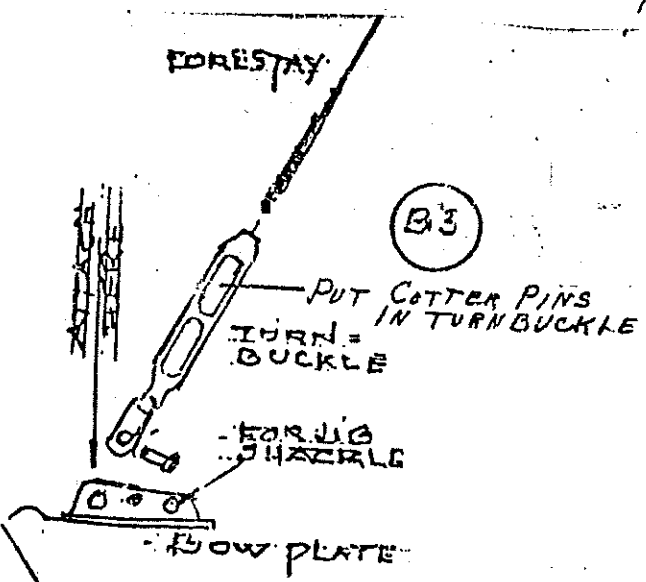
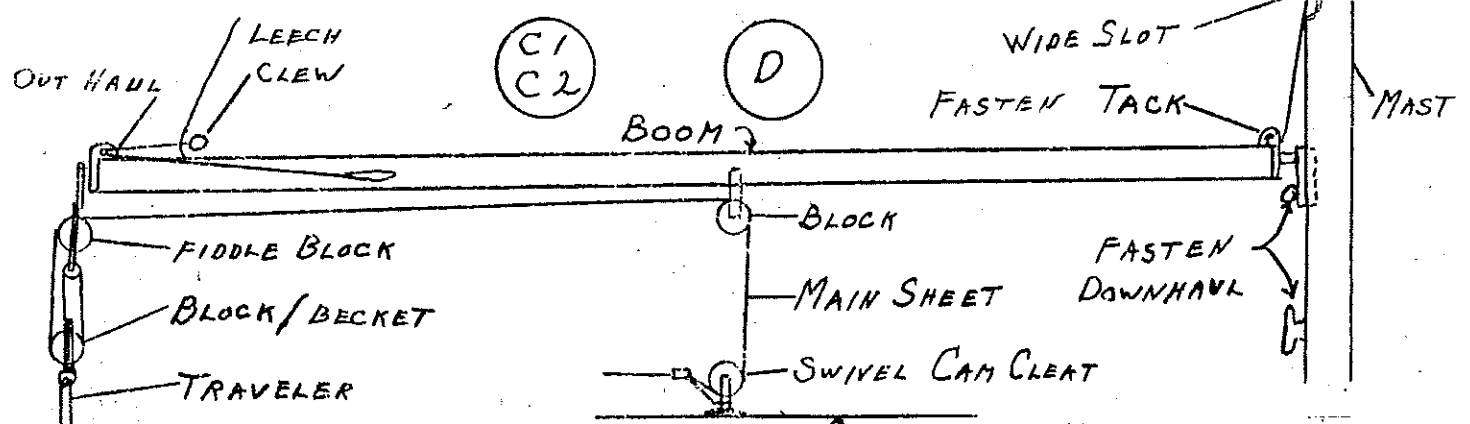
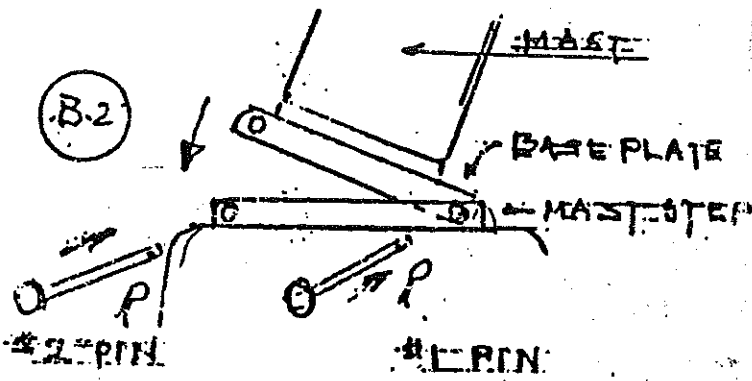
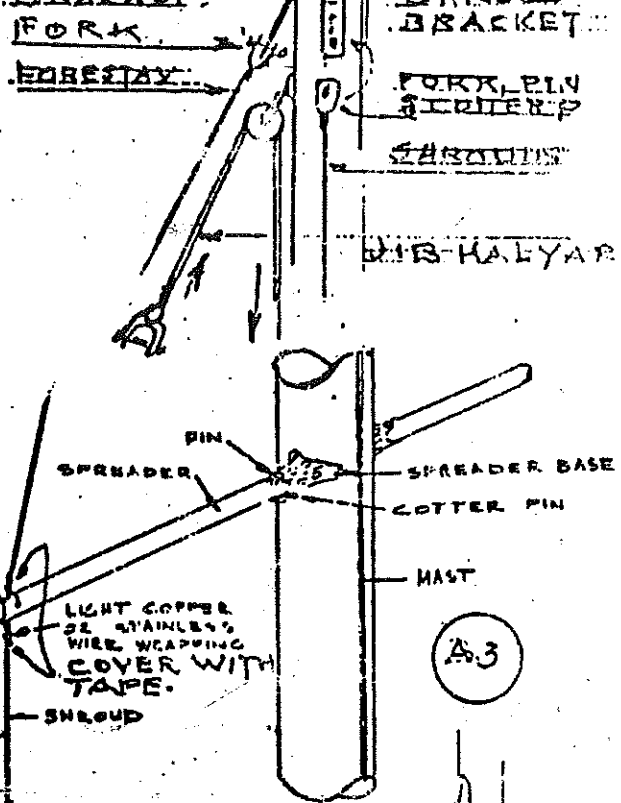


C. Boom

1. Fasten two blocks with shackles to brackets on underside of boom. Slip gooseneck (forward end) into wide slot above bottom of mast, truckside up.
2. Attach mainsheet to becket of block on traveler. Feed line through blocks as shown in diagram.



1. Fasten lower ends of shrouds to chainplates with adjusters, using 4th hole (from top). Do not fasten forestay, but attach turnbuckle to end.
2. Put bottom plate of mast on maststep as shown, engage rear pin, then raise mast to vertical position and attach forestay to bowplate.
3. Reset shroud adjusters and operate forestay turnbuckle to set the mast in vertical and square position. Adjusters should be equal, turnbuckle snug but not too taut.



- C. Boom**
1. Fasten two blocks with shackles to brackets on underside of boom. Slip gooseneck (forward end) into wide slot above bottom of mast, trackside up.
 2. Attach mainsheet to becket of block on traveler. Feed line through blocks as shown in diagram.
- D. Mainsail**
1. Untie main halyard from mast and attach shackle to grommet in main head. Feed luff side of sail into track on mast while slowly hoisting sail with free end of halyard. Then attach halyard to cleat. Slip pin through tack grommet fastening tack to boom.
 2. Slip feet of sail starting with clew into track on boom. Pull aft and tighten with outhaul (6' line) as shown.
 3. Attach downhaul line to gooseneck and tie down boom to bottom cleat on mast.